

Art A Level

Exam Board: AQA

Entry Requirements: GCSE Grade 6 in Art

Subject Content

Projects Studied in Year 12 & 13:

In Year 12, students have a foundation skills introduction to key processes and techniques before moving onto longer projects (personal investigations) set by the Art Department. In February of Year 13, the externally set project is shared by the exam board concluding with a 15 hour exam in April.

Learners are required to work in two or more of the areas below:

Fine Art - areas of study such as painting, printmaking or sculpture.

Graphic Communication - areas of study such as illustration, packaging or advertising.

Photography - areas of study such as traditional, digital or moving image.

Textile Design - areas of study such as printed and digital textiles, fashion design or constructed textiles.

Critical and Contextual Studies - areas of study such as art theory, artistic movements or architecture.

Skills gained and enrichment opportunities:

This course provides skills and training across the realm of Art & Design. Students develop critical and analytical thinking alongside creativity, oral and visual presentation skills. We aim to foster independent enquiry, time management and resilience. We encourage students' experience of the art world through galleries and museums visits.

Progression/career opportunities:

An A level in Art and Design opens the doors to many courses and career options. Students go on to specialise or work in graphic design, illustration, fine art, photography, textile design, fashion design, animation, three-dimensional design and architecture to name a few.

Why Art A Level?

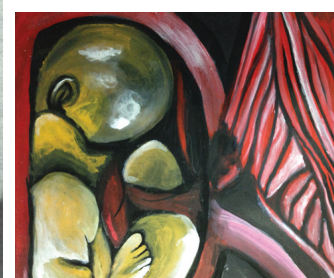
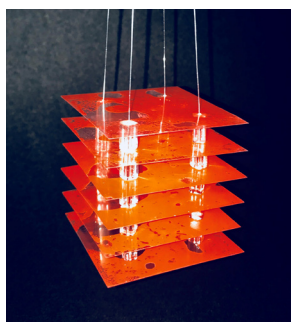
The Art A level allows the student to engage in a wide variety of techniques and processes. The Art Room is equipped with a PC suite with industry standard Adobe software, etching, screen printing, relief printing and ceramics facilities, as well as drawing, painting and 3D sculpture work. The Sixth Form have a dedicated studio area within our large open plan space, giving the immediate feel of studying in a specialised, professional environment.

Assessments

Year 12 and Year 13:

The projects are assessed according to AQA grading criteria. There are four areas students are graded in: development through investigation, refinement through experimentation, recording, personal response and outcomes.

The A Level grade is made up of 60% coursework - including a 1000-3000 word essay, and 40% exam project (externally set task).



Further information:

Ms E Cooper - Head of Art, Design and Technology
Emma.Cooper@Walthamstow-Academy.Org